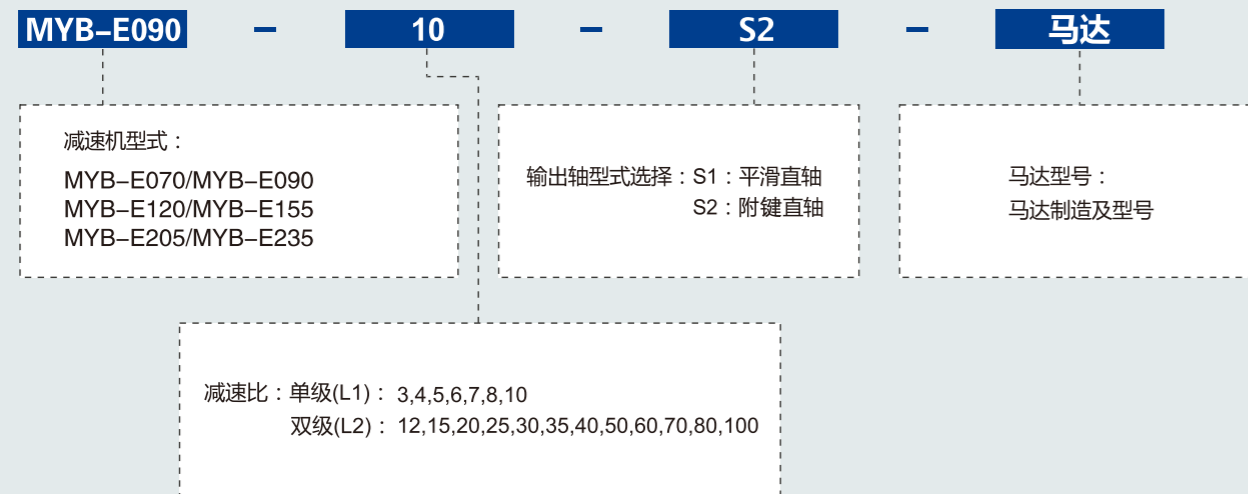


MYB-E SERIES

精密行星减速机



型号说明 MODEL ILLUMINATE



选型范例：MYB-E090-10-S2-P2/MHMD-082G1U

创新 + 质量 + 服务

性能 -MYB-E 减速机

规格	级数	减速比 ¹	MYB-E070	MYB-E090	MYB-E120	MYB-E155	MYB-E205	MYB-E235			
额定输出力矩T _{2N}	1	3	55	130	208	342	588	1,140			
		4	50	140	290	542	1,050	1,700			
		5	60	160	330	650	1,200	2,000			
		6	55	150	310	600	-	-			
		7	50	140	300	550	1,100	1,800			
		8	45	120	260	500	1,000	1,600			
		10	40	100	230	450	520	1,220			
		2	12	55	130	208	342	-	-		
			15	55	130	208	342	588	1,140		
			20	50	140	290	542	1,050	1,700		
	25		60	160	330	650	1,200	2,000			
	30		50	130	208	342	1,200	2,000			
	35		60	160	330	650	1,200	2,000			
	40		50	140	290	542	1,200	2,000			
	50		60	160	330	650	1,200	2,000			
	最大输出力矩T _{2B}	Nm	60	55	150	310	600	-	-		
			70	50	140	300	550	1,100	1,800		
			80	45	120	260	500	1,000	1,600		
100			40	100	230	450	520	1,220			
最大输入转速n ₁			rpm	1,2	3~100	3倍额定输出力矩					
最大输入转速n _{1B}			rpm	1,2	3~100	5,000	4,000	4,000	3,000	3,000	2,000
背隙			arcmin	1	3~10	≤5	≤5	≤5	≤5	≤5	≤5
				2	12~100	≤7	≤7	≤7	≤7	≤7	≤7
扭转刚性			Nm/arcmin	1,2	3~100	7	14	25	50	145	225
容许径向力F _{2rB} ²			N	1,2	3~100	1,530	3,250	6,700	9,400	14,500	50,000
容许轴向力F _{2a1B} ²	N	1,2	3~100	630	1,300	3,000	4,000	6,200	35,000		
容许轴向力F _{2a2B} ²	N	1,2	3~100	765	1,625	3,350	4,700	7,250	25,000		
使用寿命	hr	1,2	3~100	20,000*							
效率 η	%	1	3~10	≥97%							
		2	12~100	≥94%							
重量	kg	1	3~10	1.3	3.7	7.8	14.5	29	48		
		2	12~100	1.9	4.1	9	17.5	33	60		
使用温度	°C	1,2	3~100	-10°C~+90°C							
润滑		1,2	3~100	合成润滑油脂							
防护等级		1,2	3~100	IP65							
安装方向		1,2	3~100	任意方向							
噪音值 (n ₁ =3000rpm)	dB	1,2	3~100	≤58	≤60	≤63	≤65	≤67	≤70		

惯量 -MYB-E 减速机

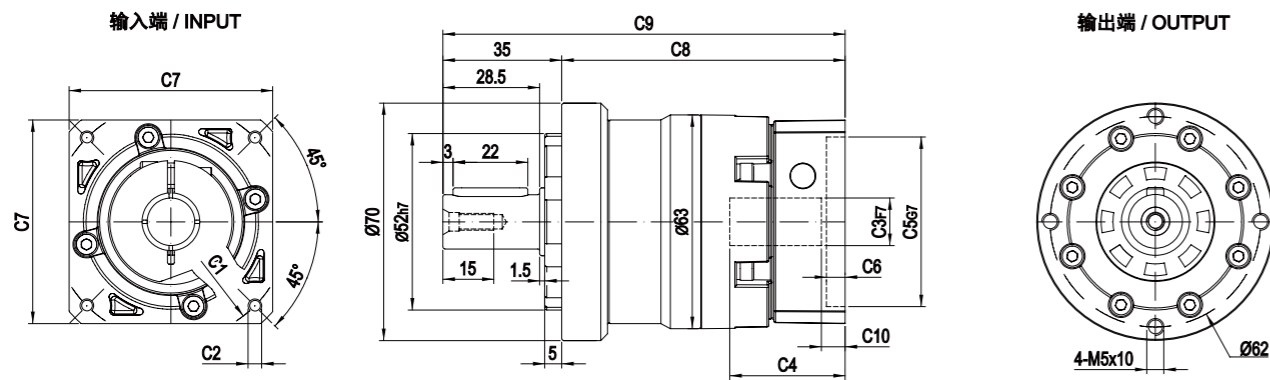
规格	级数	减速比 ¹	MYB-E070	MYB-E090	MYB-E120	MYB-E155	MYB-E205	MYB-E235	
转动惯量J ₁	1	3	0.16	0.61	3.25	9.21	28.98	69.61	
		4	0.14	0.48	2.74	7.54	23.67	54.37	
		5	0.13	0.47	2.71	7.42	23.29	53.27	
		6	0.13	0.45	2.65	7.25	22.75	51.72	
		7	0.13	0.45	2.62	7.14	22.48	50.97	
		8	0.13	0.44	2.58	7.07	22.59	50.84	
		10	0.13	0.44	2.57	7.03	22.51	50.56	
		2	12	0.03	0.13	0.47	2.71	7.42	23.29
			15	0.03	0.13	0.47	2.71	7.42	23.29
			20	0.03	0.13	0.47	2.71	7.42	23.29
	25		0.03	0.13	0.47	2.71	7.42	23.29	
	30		0.03	0.13	0.47	2.71	7.42	23.29	
	35		0.03	0.13	0.47	2.71	7.42	23.29	
	40		0.03	0.13	0.47	2.71	7.42	23.29	
	50		0.03	0.13	0.44	2.57	7.03	22.51	
	60	0.03	0.13	0.44	2.57	7.03	22.51		
	70	0.03	0.13	0.44	2.57	7.03	22.51		
	80	0.03	0.13	0.44	2.57	7.03	22.51		
100	0.03	0.13	0.44	2.57	7.03	22.51			

1. 减速比 (i=N_{in}/N_{out})
* 连续运转降低使用寿命二分之一。

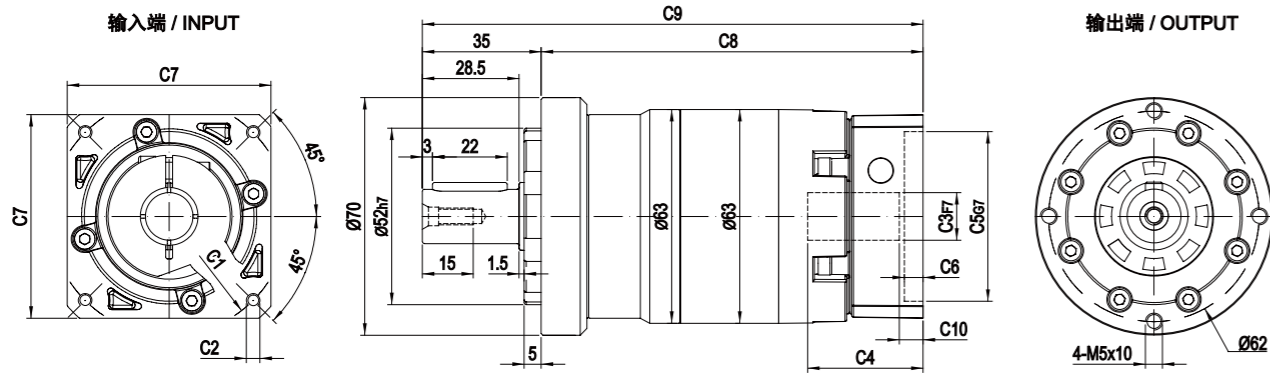
2. 输出转速 100rpm 时，作用于输出轴中心位置。

外形尺寸图 / OUTLINE DIMENSION SHEET

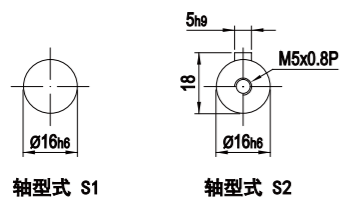
MYB-E-070-L1



MYB-E-070-L2



输出轴径 / Output Diameter

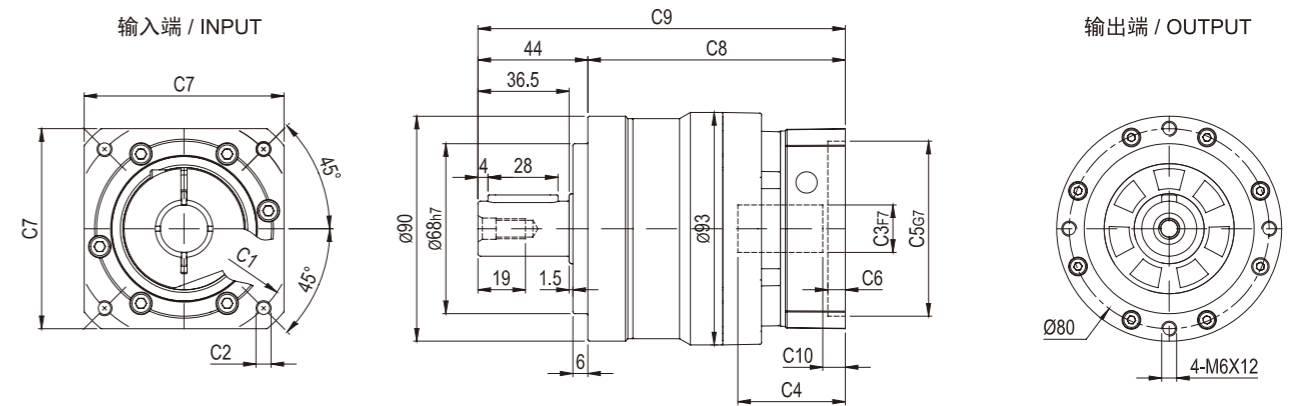


尺寸	C1	C2	C3	C4	C5	C6	C7	C8	C9	C10
MYB-E-070-L1	Ø66.7	4-M4x12	Ø8	34	Ø38.1	5.5	60	83.5	118.5	7
	Ø70	4-M4x12, 4-M5x12	Ø11, Ø14	34	Ø50	5.5	60	83.5	118.5	7
	Ø90	4-M5x15, 4-M6x15	Ø19	42	Ø70	7	80	92.5	127.5	9
MYB-E-070-L2	Ø66.7	4-M4x12	Ø8	34	Ø38.1	5.5	60	112.5	147.5	7
	Ø70	4-M4x12, 4-M5x12	Ø11, Ø14	34	Ø50	5.5	60	112.5	147.5	7
	Ø90	4-M5x15, 4-M6x15	Ø19	42	Ø70	7	80	121.5	156.5	9

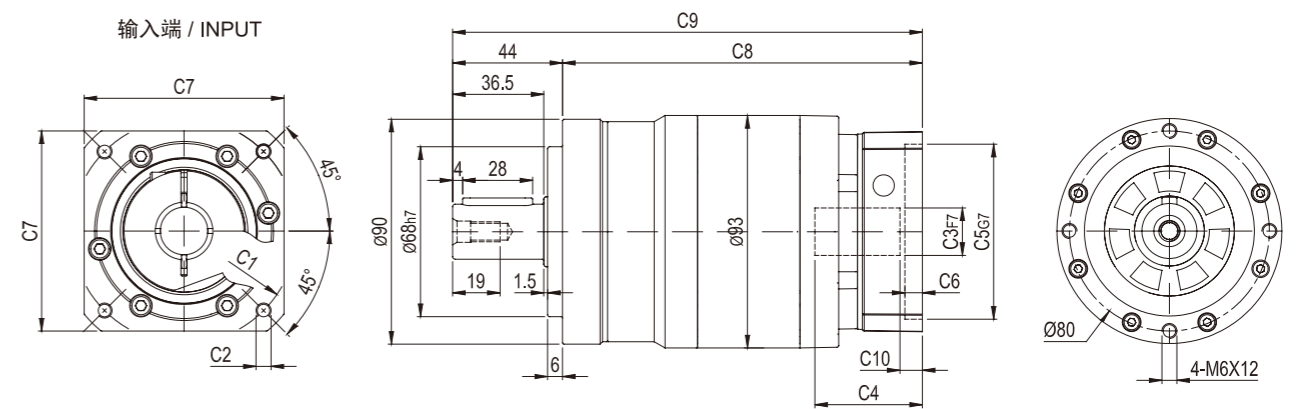
* C1-C7是公制标准马达连接板之尺寸, 可根据客户要求单独定做。
 * C1-C7 are motor (metric standard) specific dimensions, which could be customised.

外形尺寸图 / OUTLINE DIMENSION SHEET

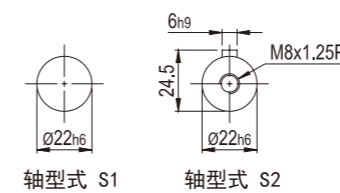
MYB-E-090-L1



MYB-E-090-L2



输出轴径 / Output Diameter

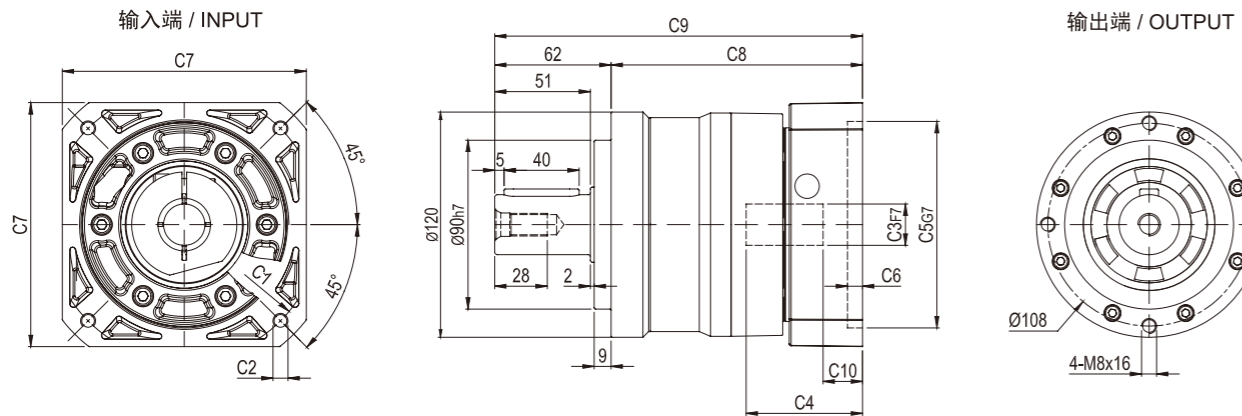


尺寸	C1	C2	C3	C4	C5	C6	C7	C8	C9	C10
MYB-E-090-L1	Ø90	4-M5x15, 4-M6x15	Ø19	43	Ø70	7	80	103	147	9
	Ø100	4-M6x15	Ø16, Ø19	43	Ø80	7	86	103	147	9
	Ø115	4-M8x20	Ø19, Ø22, Ø24	56.5	Ø95	10	100	119.5	163.5	17.5
	Ø145	4-M8x20	Ø19, Ø22, Ø24	60	Ø110	8	130	123	167	21
MYB-E-090-L2	Ø90	4-M5x15, 4-M6x15	Ø19	43	Ø70	7	80	144	188	9
	Ø100	4-M6x15	Ø16, Ø19	43	Ø80	7	86	144	188	9
	Ø115	4-M8x20	Ø19, Ø22, Ø24	56.5	Ø95	10	100	160.5	204.5	17.5
	Ø145	4-M8x20	Ø19, Ø22, Ø24	60	Ø110	8	130	164	208	21

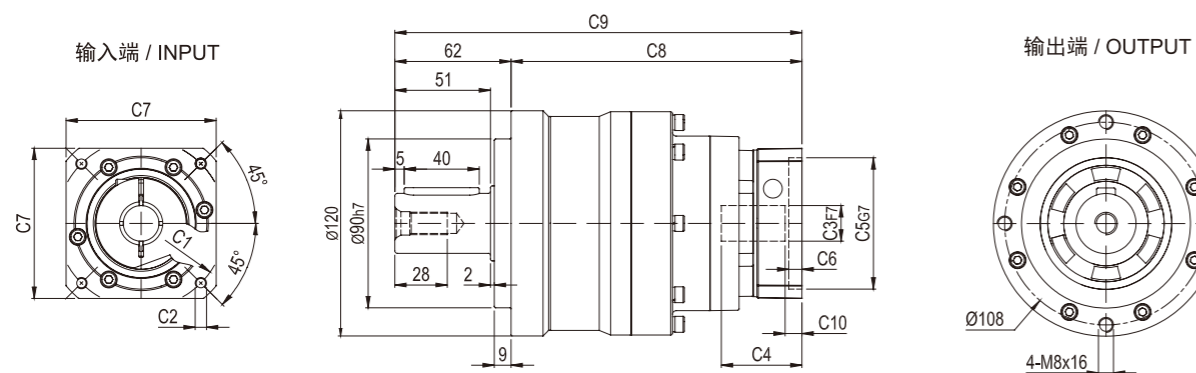
* C1-C7是公制标准马达连接板之尺寸, 可根据客户要求单独定做。
 * C1-C7 are motor (metric standard) specific dimensions, which could be customised.

外形尺寸图 / OUTLINE DIMENSION SHEET

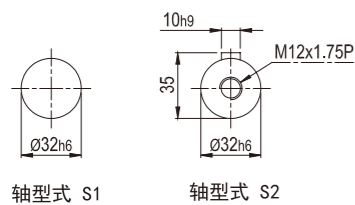
MYB-E-120-L1



MYB-E-120-L2



输出轴径 / Output Diameter

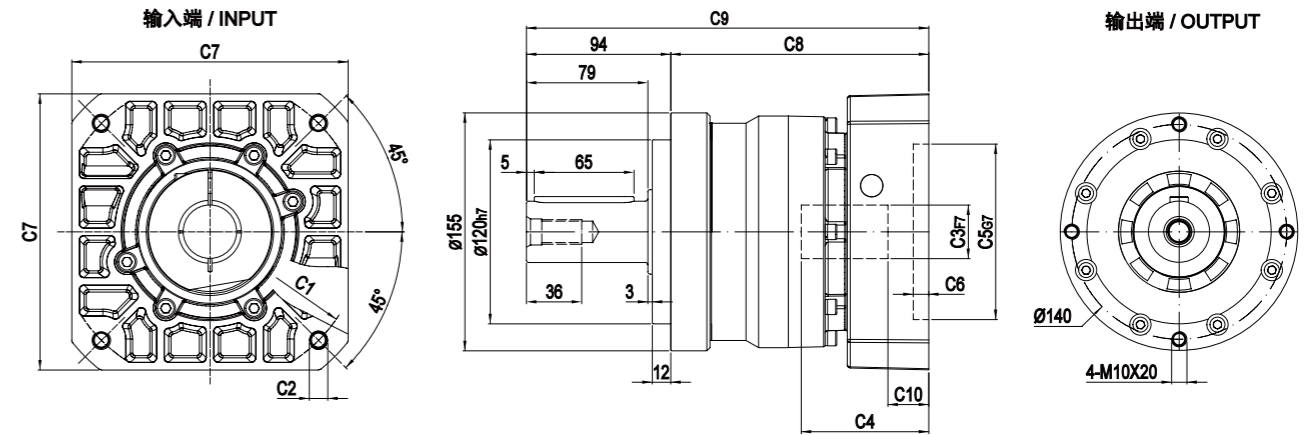


尺寸	C1	C2	C3	C4	C5	C6	C7	C8	C9	C10
MYB-E-120-L1	$\phi 145$	4-M8x20	$\phi 19, \phi 22, \phi 24$	62	$\phi 110$	8	130	134	196	21
	$\phi 200$	4-M12x30	$\phi 35$	82	$\phi 114.3$	10	180	154	216	28
MYB-E-120-L2	$\phi 90$	4-M5x15, 4-M6x15	$\phi 19$	43	$\phi 70$	7	80	155	217	9
	$\phi 100$	4-M6x15	$\phi 16, \phi 19$	43	$\phi 80$	7	86	155	217	9
	$\phi 115$	4-M8x20	$\phi 19, \phi 22, \phi 24$	56.5	$\phi 95$	10	100	171.5	233.5	17.5
	$\phi 145$	4-M8x20	$\phi 19, \phi 22, \phi 24$	60	$\phi 110$	8	130	175	237	21

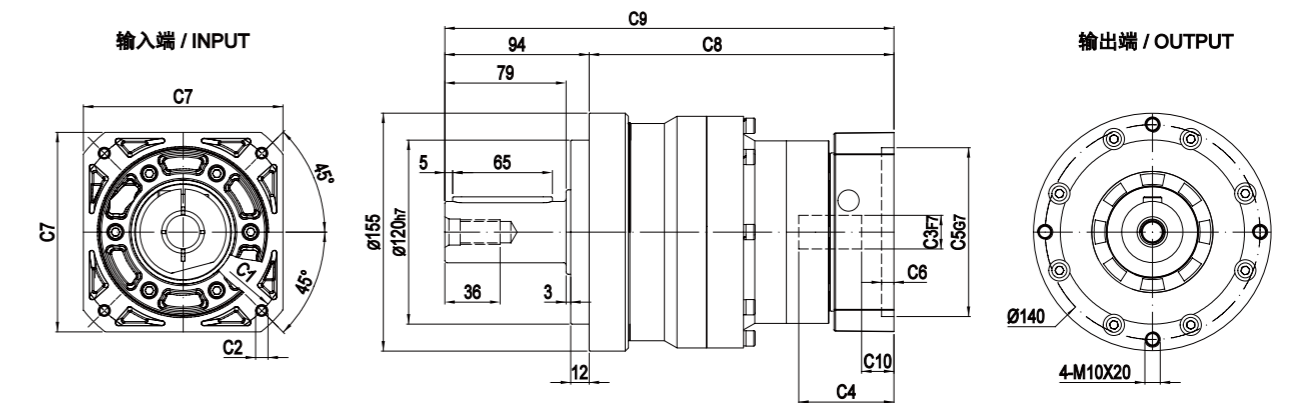
* C1-C7是公制标准马达连接板之尺寸, 可根据客户要求单独定做。
* C1-C7 are motor(metric standard) specific dimensions, which could be customised.

外形尺寸图 / OUTLINE DIMENSION SHEET

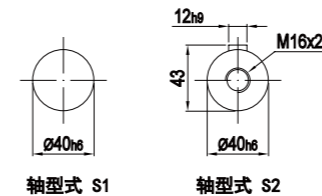
MYB-E-155-L1



MYB-E-155-L2



输出轴径 / Output Diameter

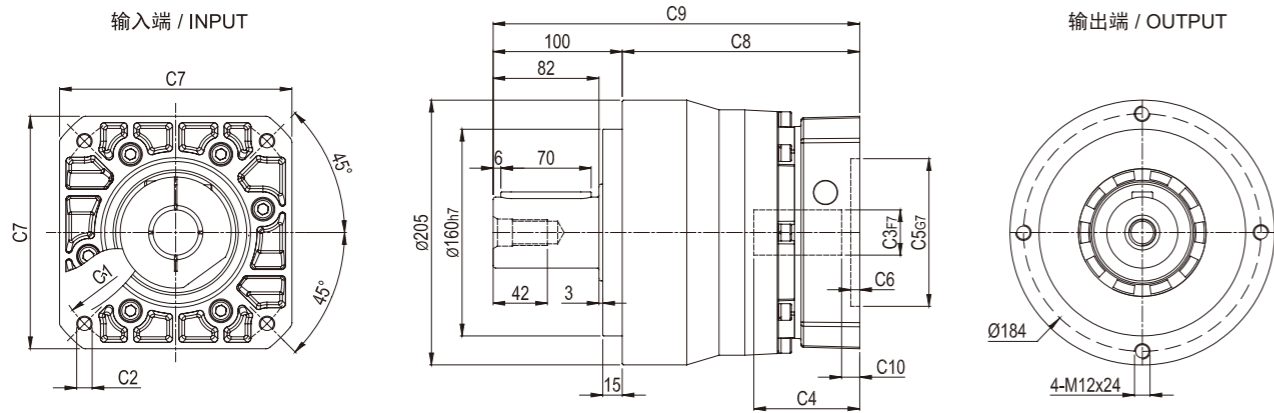


尺寸	C1	C2	C3	C4	C5	C6	C7	C8	C9	C10
MYB-E-155-L1	$\phi 145$	4-M8x20	$\phi 22, \phi 24$	72	$\phi 110$	10	130	157	251	20.5
	$\phi 200$	4-M12x30	$\phi 35$	83	$\phi 114.3$	10	180	168	262	26.5
MYB-E-155-L2	$\phi 145$	4-M8x20	$\phi 19, \phi 22, \phi 24$	62	$\phi 110$	8	130	198.5	292.5	21
	$\phi 200$	4-M12x30	$\phi 35$	82	$\phi 114.3$	10	180	218.5	312.5	28

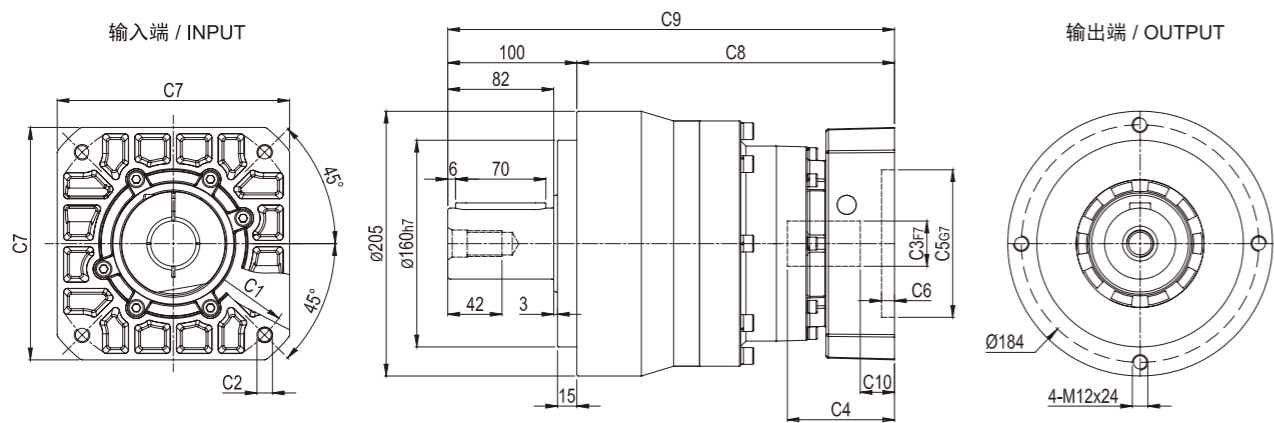
* C1-C7是公制标准马达连接板之尺寸, 可根据客户要求单独定做。
* C1-C7 are motor(metric standard) specific dimensions, which could be customised.

外形尺寸图 / OUTLINE DIMENSION SHEET

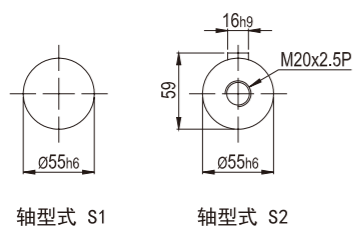
MYB-E-205-L1



MYB-E-205-L2



输出轴径 / Output Diameter

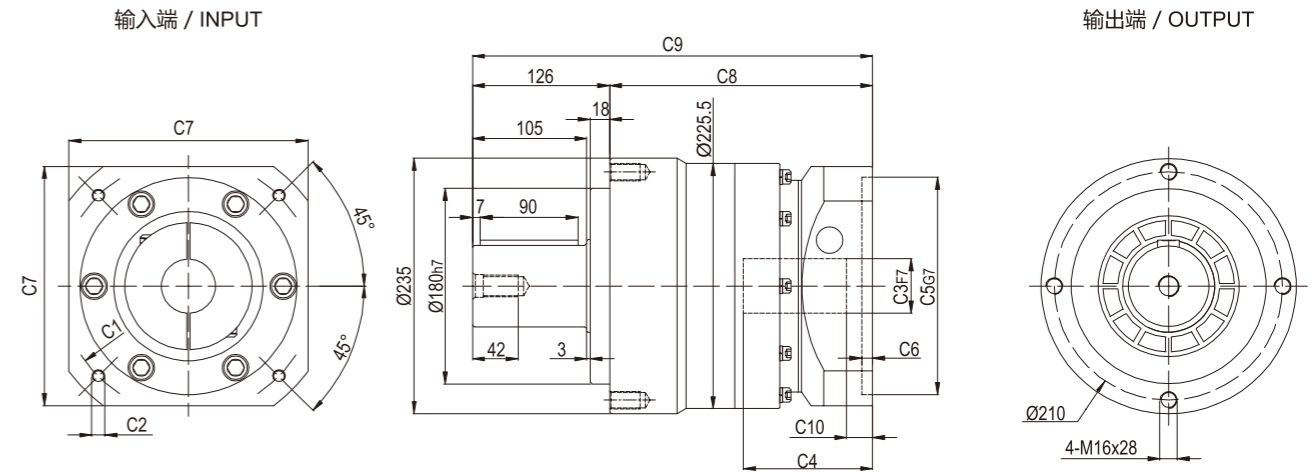


尺寸	C1	C2	C3	C4	C5	C6	C7	C8	C9	C10
MYB-E-205-L1	Ø200	4-M12x30	Ø35	82	Ø114.3	7	180	184	284	14
	Ø235	4-M12x30	Ø42	120	Ø200	10	220	222	322	44
MYB-E-205-L2	Ø145	4-M8x20	Ø22,Ø24	72	Ø110	10	130	235	335	20.5
	Ø200	4-M12x30	Ø35	83	Ø114.3	10	180	246	346	26.5

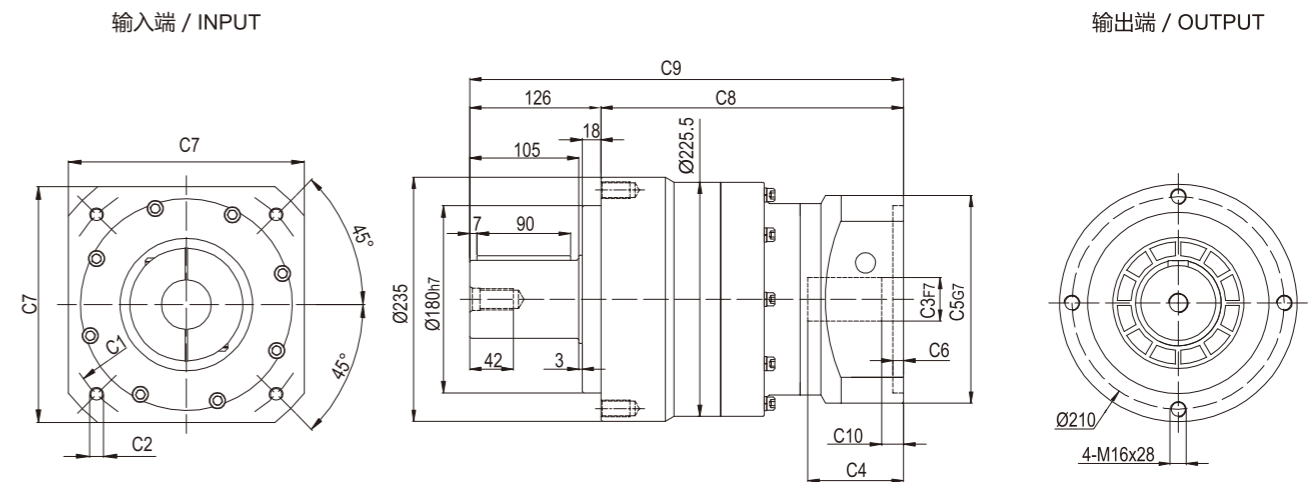
* C1-C7是公制标准马达连接板之尺寸, 可根据客户要求单独定做。
 * C1-C7 are motor(metric standard) specific dimensions, which could be customised

外形尺寸图 / OUTLINE DIMENSION SHEET

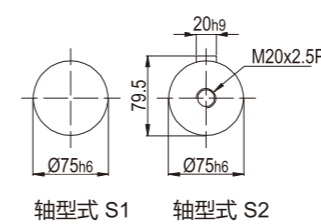
MYB-E-235-L1



MYB-E-235-L2



输出轴径 / Output Diameter



尺寸	C1	C2	C3	C4	C5	C6	C7	C8	C9	C10
MYB-E-235-L1	Ø200	4-M12x30	Ø35,Ø42	116	Ø114.3	15	180	239	365	19.5
	Ø215	4-M12x30	Ø42	109	Ø180	8	192	232	358	12.5
	Ø235	4-M12x30	Ø42,Ø55	119	Ø200	10	220	242	368	22.5
MYB-E-235-L2	Ø200	4-M12x30	Ø35	85	Ø114.3	7	180	276	402	7.5
	Ø200	4-M12x30	Ø42	116	Ø114.3	7	180	307	433	40
	Ø215	4-M12x30	Ø42	90	Ø180	8	192	281	407	14
	Ø235	4-M12x30	Ø42	120	Ø200	10	220	311	437	44

* C1-C7是公制标准马达连接板之尺寸, 可根据客户要求单独定做。
 * C1-C7 are motor(metric standard) specific dimensions, which could be customised.